

Bxpoke

DESIGNS

Catalogue

**ACM Facade
Solutions**

JAN 2025
ISSUE NO.02

WWW.BXPOKE-DESIGNS.COM

Bxpoke DESIGNS

Material

What is ACM
Benefits of ACM products
Application by Industry
Colors and Finishes

01

04

Cladding Collection

(Interior and exterior)

Flat Panels
Flat Panels with Custom designs
3D Panels
3D Panels with custom Patterns

05

14

About US

Who we are

18

Table of Content

What is ACM?

ACM stands for **Aluminum Composite Material**, a versatile and durable building material made up of two thin layers of aluminum bonded to a non-aluminum core, typically made of polyethylene or fire-resistant material.

Benefits of ACM:

- **Lightweight yet Strong:** Despite being lightweight, ACM is highly durable and resistant to impact.
- **Weather-Resistant:** It withstands harsh environmental conditions, making it ideal for exterior applications.
- **Customizable:** Available in a wide range of colors, finishes, and textures, including metallic, glossy, matte, and woodgrain.
- **Flexible for Design:** Its flexibility allows for creative 2D and 3D shapes, perfect for architectural and decorative purposes.
- **Eco-Friendly Options:** Many ACM panels are recyclable and contribute to sustainable building practices.

Applications by Industry:

- Residential Spaces
- Commercial Buildings
- Hospitality and Retail


Colors and Finishes

ACM panels inspire endless creativity, transforming color into a tool for storytelling. Each hue evokes emotion, enhances depth, and shapes the mood of a space. From bold metallics to warm woodgrains, ACM brings designs to life, adding movement and harmony that captivate and redefine architectural beauty.



Nissan Gray 
NS .040"/.063"/.080"



Greyhound 
S .040"; NS .063"/.080"



Anthracite Silver Metallic
S .040"; NS .063"/.080"



Spire Blue II
NS .040"/.063"/.080"



Azure Blue 
S .040"; NS .063"/.080"



Ultramarine Blue 
S .040"; NS .063"/.080"



Russet Mica 
S .040"; NS .063"/.080"



Red Fire 
S .040"; NS .063"/.080"



Patriot Red 
S .040"; NS .063"/.080"



Carb Red 
NS .040"/.063"/.080"



Bowtie Blue II
NS .040"/.063"/.080"



Image Blue
NS .040"/.063"/.080"



Tuscan Sun 
NS .040"/.063"/.080"



Botanical 
NS .040"/.063"/.080"

The Natural Collection

Element Series



Aragonite Metallic 
NS .040"/.063"/.080"



Moonstone Metallic 
S .040"; NS .063"/.080"



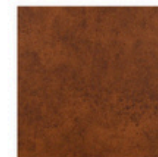
Olivine Metallic 
S .040"; NS .063"/.080"



Colorado Gold Metallic 
S .040"; NS .063"/.080"



Native Copper Mica
S .040"; NS .063"/.080"



Rusted Metal
NA .040"/.063"/.080"



Zinc
NA .040"/.063"/.080"




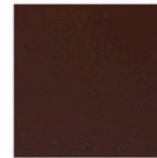
Basalt Gray
NS .040"/.063"/.080"



Cubanite Metallic
NS .040"/.063"/.080"



Serpentine Metallic 
S .040"; NS .063"/.080"



Almandine Garnet Metallic
NS .040"/.063"/.080"



Brushed Antique Copper
NA .040"/.063"/.080"



Brushed**
NA .040"/.063"/.080"



Brushed Stainless**
NA .040"/.063"/.080"



Brushed Carbon**
NA .040"/.063"/.080"



Reflect Mirror*
NA .040"/.063"/.080"

*Sample is meant to demonstrate the reflective qualities of the surface but is not an exact match; please request a sample to see the true mirror finish

**The tinted finish highlights the natural variations and beauty of the metal.

The Classic Collection



Statuary Bronze ✓
S .040"; NS .063"/.080"



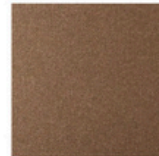
New-Age Dark Bronze Mica ✓
S .040"/.063"/.080"



JLR Gray Metallic ✓
S .040"/.063"/.080"



Driftwood Mica ✓
S .040"; NS .063"/.080"



Atacama Bronze Metallic ✓
S .040"; NS .063"/.080"



Hazelnut Mica ✓
S .040"; NS .063"/.080"



Beige ✓
S .040"; NS .063"/.080"



Castle Gray ✓
S .040"; NS .063"/.080"



JLR Champagne Metallic ✓
S .040"/.063"/.080"



Anodic Satin Mica ✓
S .040"; NS .063"/.080"



Epernay Champagne Metallic ✓
S .040"; NS .063"/.080"



Harvest Gold Mica ✓
S .040"; NS .063"/.080"



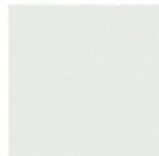
Oyster ✓
S .040"; NS .063"/.080"



Alabaster ✓
S .040"; NS .063"/.080"



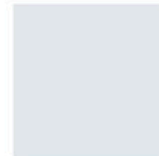
Bone White ✓
S .040"/.063"/.080"



Pure White (RVW) ✓
S .040"; NS .063"/.080"



HWH Bio White ✓
S .040"; NS .063"/.080"



Magnolia ✓
S .040"; NS .063"/.080"



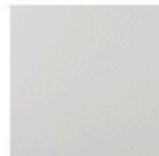
Market Pearl White Mica ✓
NS .040"/.063"/.080"



Cadet Gray ✓
S .040"; NS .063"/.080"



Platinum Mica ✓
S .040"; NS .063"/.080"



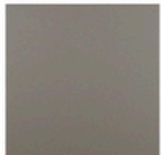
Silver Metallic ✓
S .040"; NS .063"/.080"



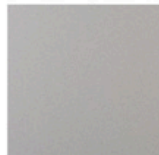
Beachstone Gray Metallic ✓
S .040"; NS .063"/.080"



Steel City Silver Mica ✓
S .040"; NS .063"/.080"



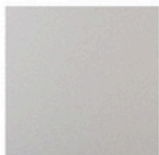
West Pewter Mica II ✓
S .040"/.063"/.080"



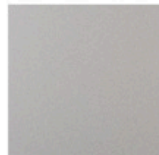
Champagne Metallic ✓
S .040"; NS .063"/.080"



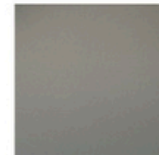
Anodic Clear Mica ✓
S .040"/.063"/.080"



Brilliant Silver Metallic ✓
S .040"; NS .063"/.080"



Sunrise Silver Metallic II ✓
S .040"; NS .063"/.080"



MZG Gray Mica II ✓
S .040"; NS .063"/.080"



Black Metallic ✓
S .040"; NS .063"/.080"



Tri-Corn Black ✓
NS .040"/.063"/.080"



TBL Black (Buick) ✓
NA .040/.063"/.080"



Focus Black II ✓
S .040"/.063"/.080"



Graphite Mica ✓
S .040"; NS .063"/.080"



Dusty Charcoal II ✓
S .040"/.063"/.080"

The Natural Collection

Terra Series



Arctic Frost 
NA .040"/.063"/.080"



Sierra Sand
NA .040"/.063"/.080"



Bronze 
NA .040"/.063"/.080"



Terracotta
NA .040"/.063"/.080"



Slate 
NA .040"/.063"/.080"



Lava Nera
NA .040"/.063"/.080"

Woodgrain Series



Rustic Walnut
NA .040"/.063"/.080"




Chestnut
NA .040"/.063"/.080"

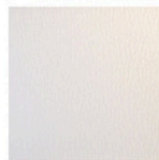
The Spectra Collection



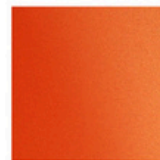
Ocean
NS .040"/.063"/.080"



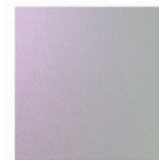
Galaxy Blue 
NS .040"/.063"/.080"



White Gold 
NS .040"/.063"/.080"



Cupral 
NS .040"/.063"/.080"

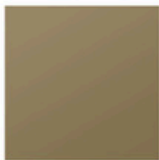


Sakura 
NS .040"/.063"/.080"

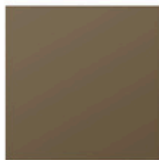
The Anodized Collection*



Clear Anodized
NA .040"/.063"/.080"



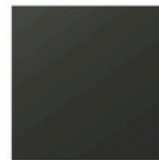
Light Bronze Anodized
NA .040"/.063"/.080"



Medium Bronze Anodized
NA .040"/.063"/.080"



Dark Bronze Anodized
NA .040"/.063"/.080"



Black Anodized
NA .040"/.063"/.080"



PRODUCT 01

ACM 2D

Flat ACM Panels are sleek, durable, and versatile, ideal for interior and exterior applications. Their smooth surfaces offer a modern, minimalist aesthetic that enhances any architectural style.



PRODUCT 02

ACM 2D

Every panel becomes a blank canvas for creative expression.



PRODUCT 03



PRODUCT 04

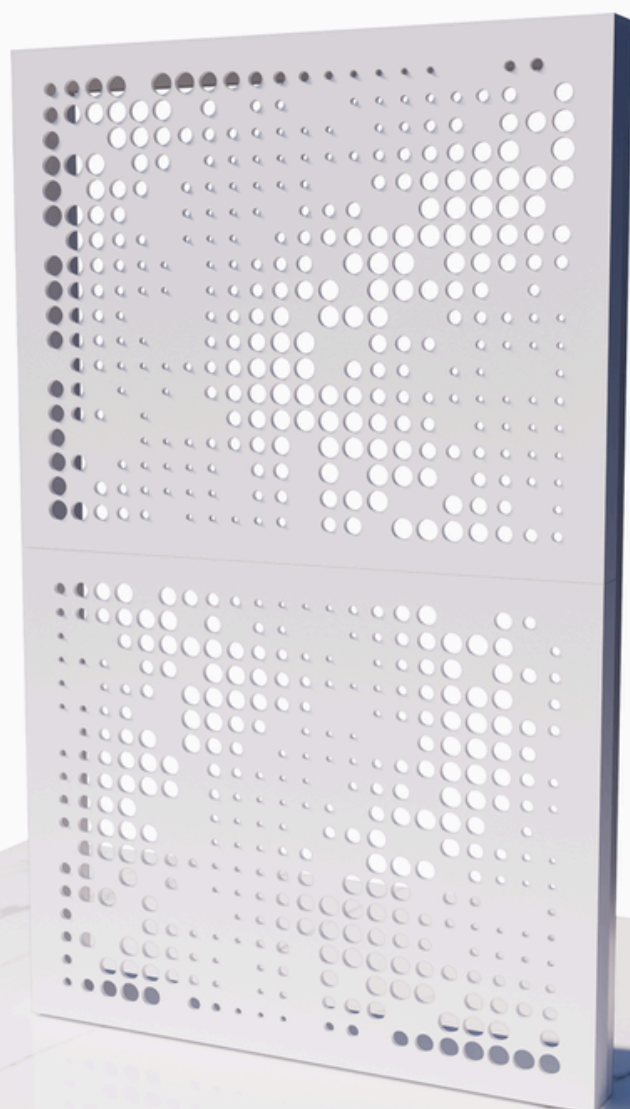
ACM 2D

PRODUCT 05

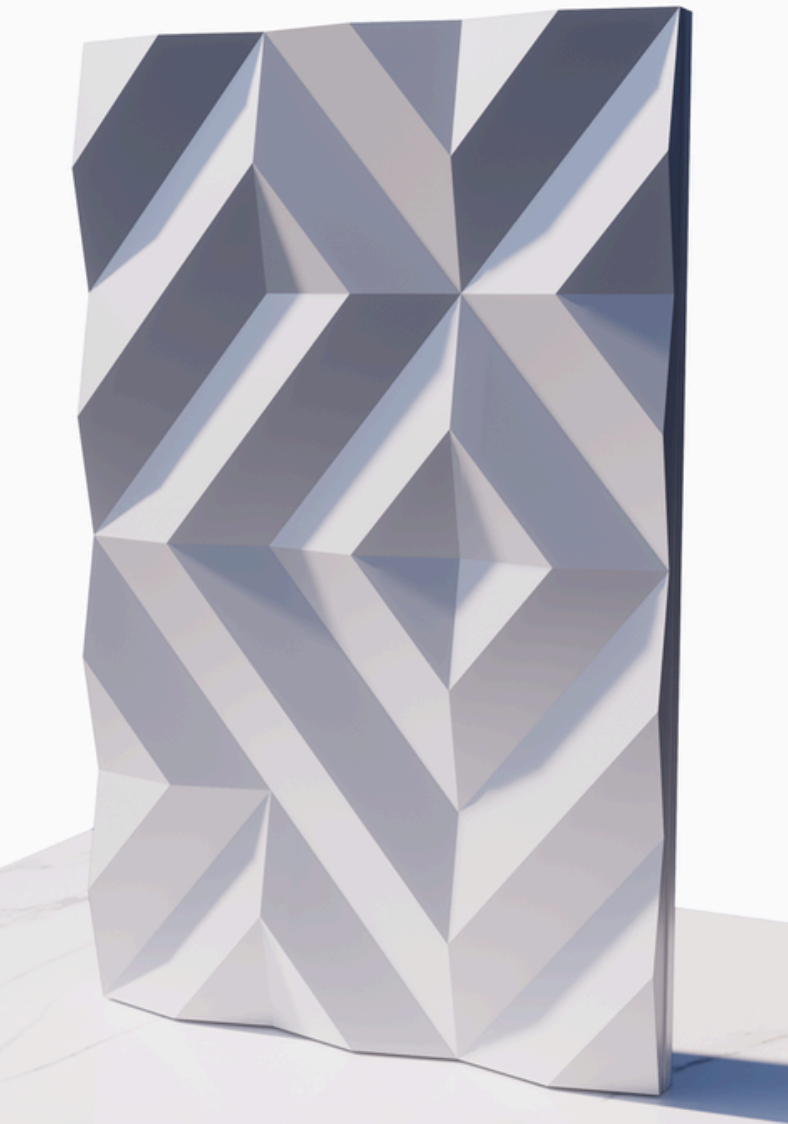


PRODUCT 06

ACM 2D



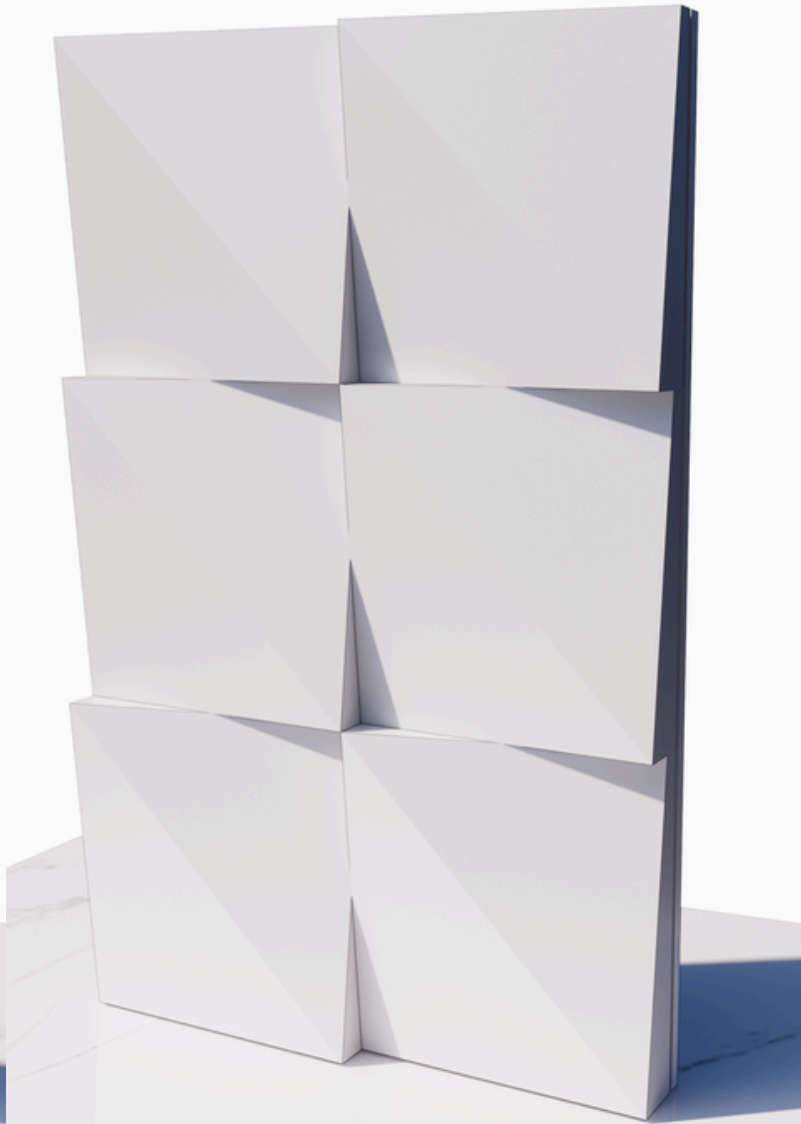
PRODUCT 07



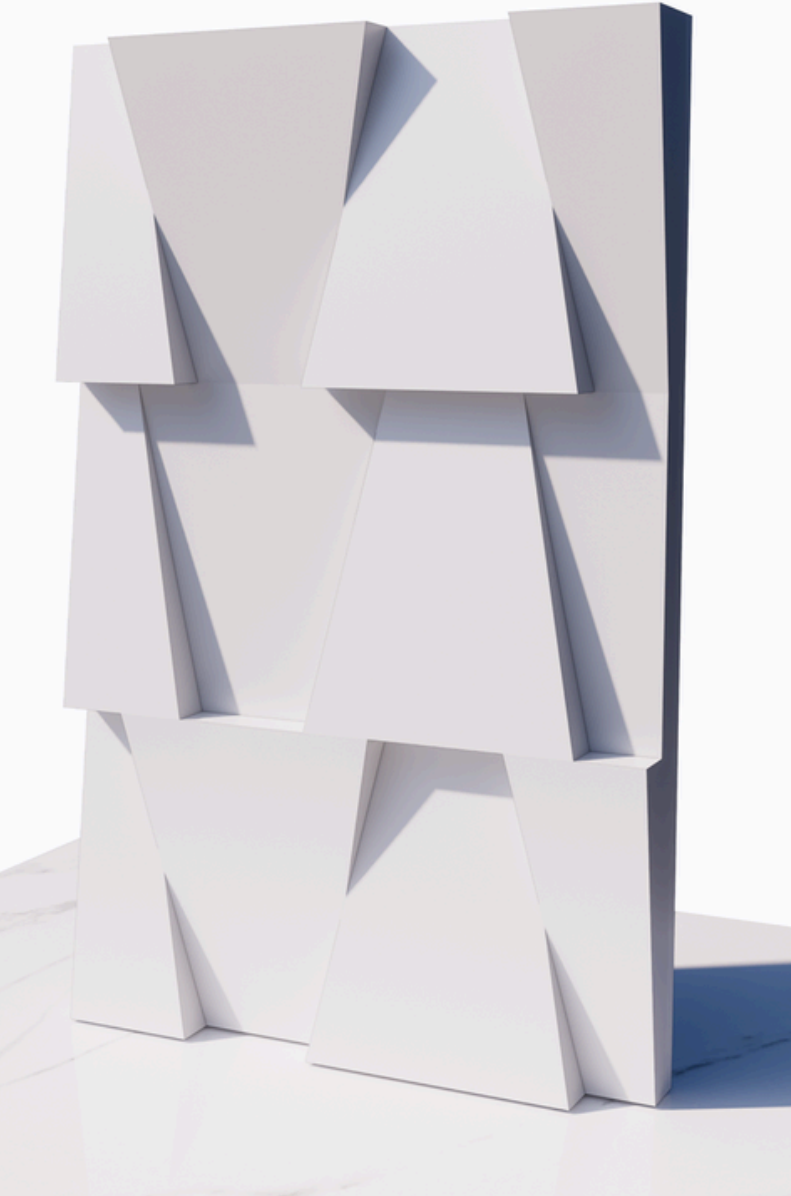
PRODUCT 01

ACM 3D

With our 3D panels, walls come alive, adding depth, texture, and movement that transform spaces into dynamic works of art.”

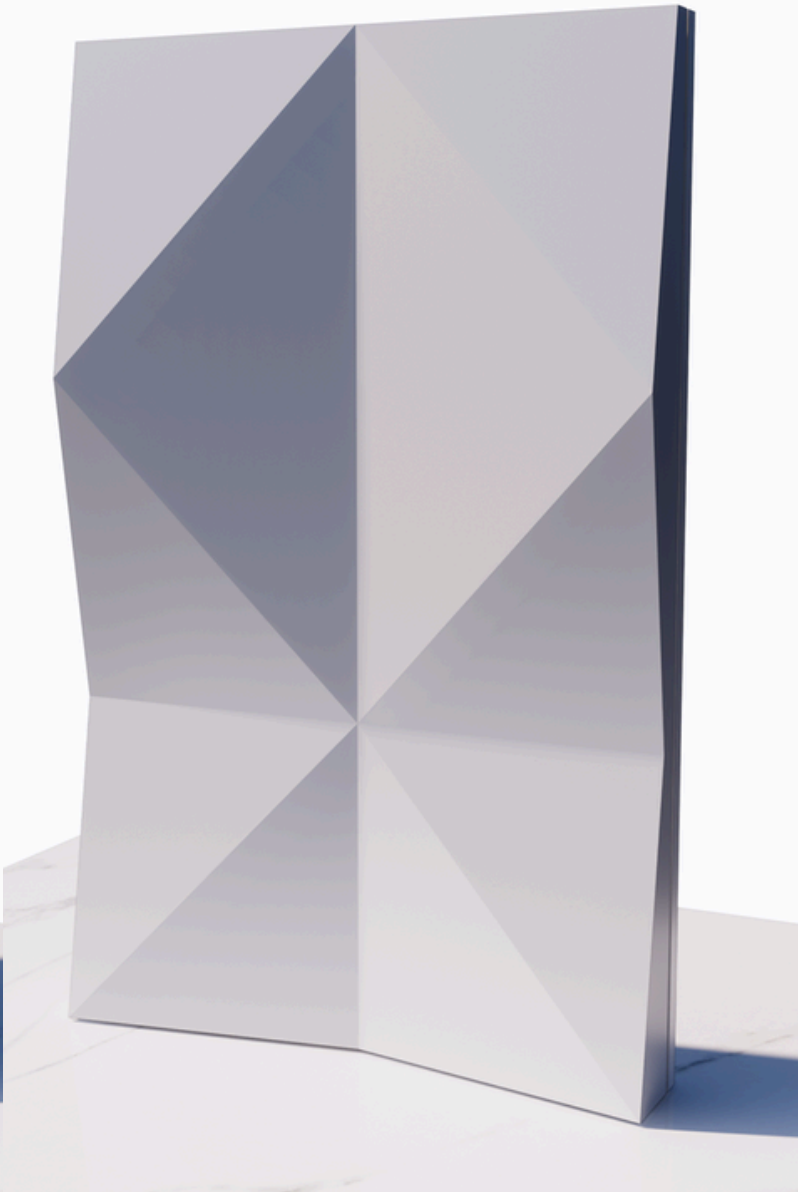


PRODUCT 02



PRODUCT 03

ACM 3D



PRODUCT 04

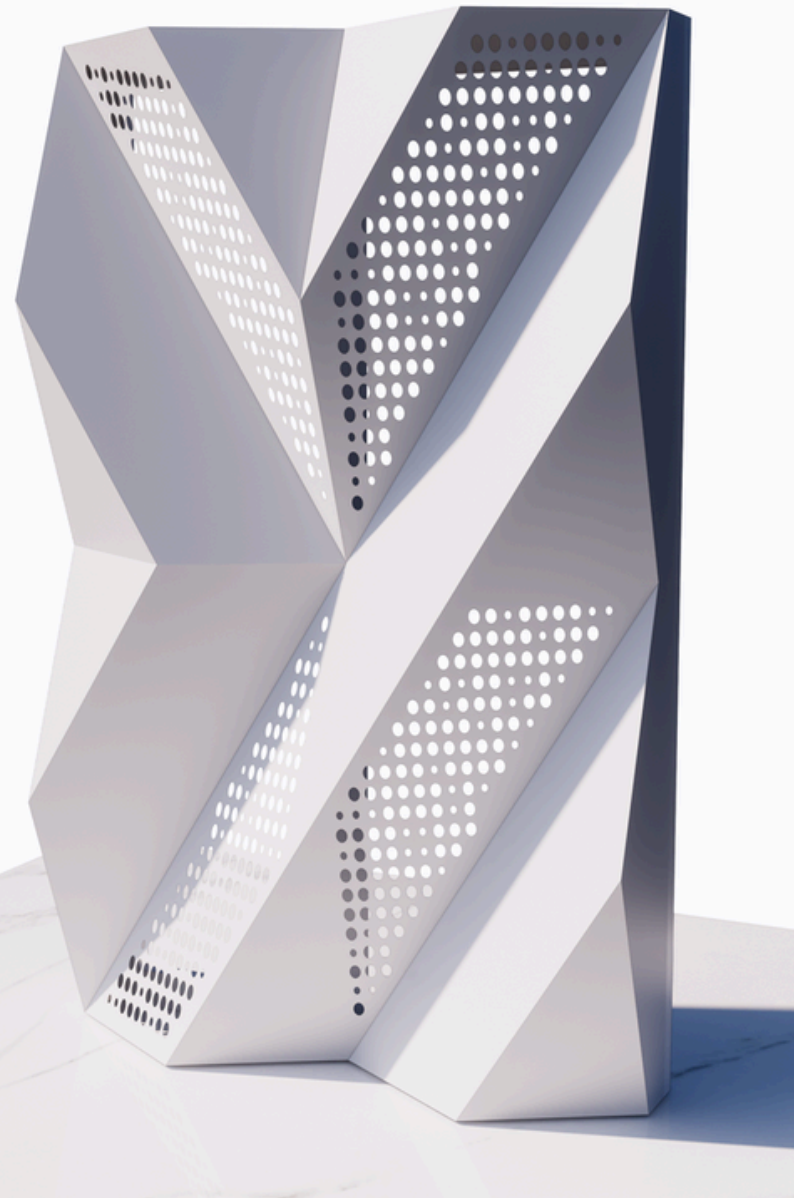
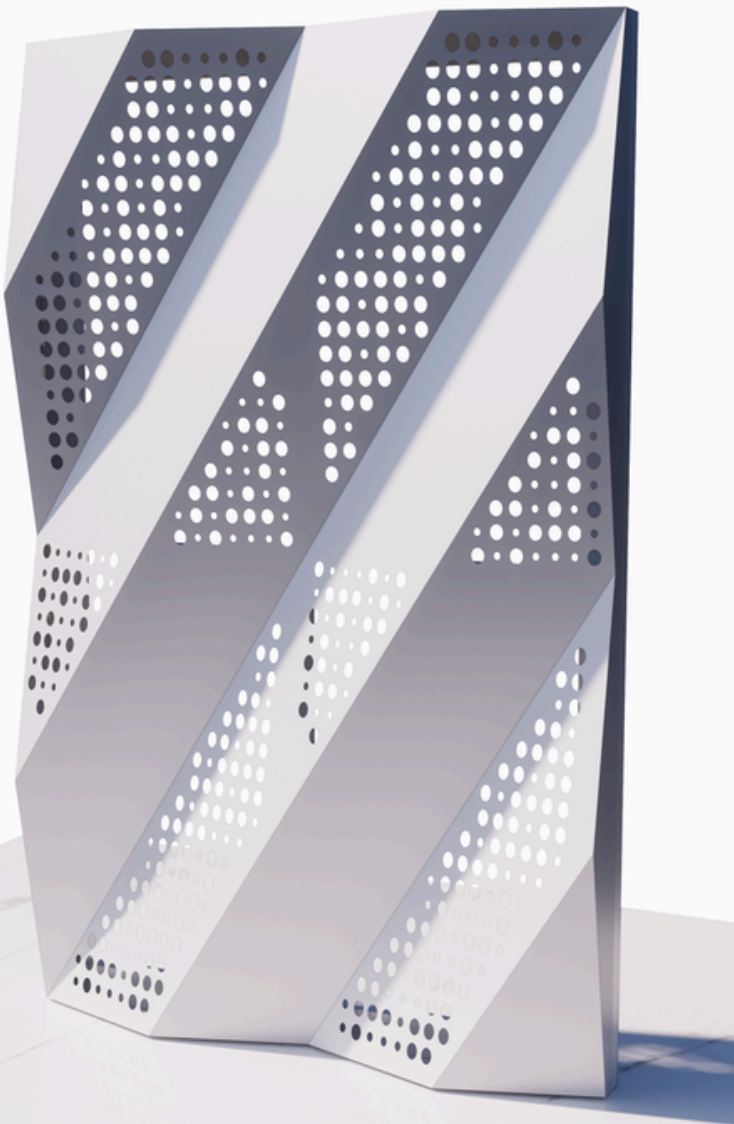


PRODUCT 05

ACM 3D



PRODUCT 06

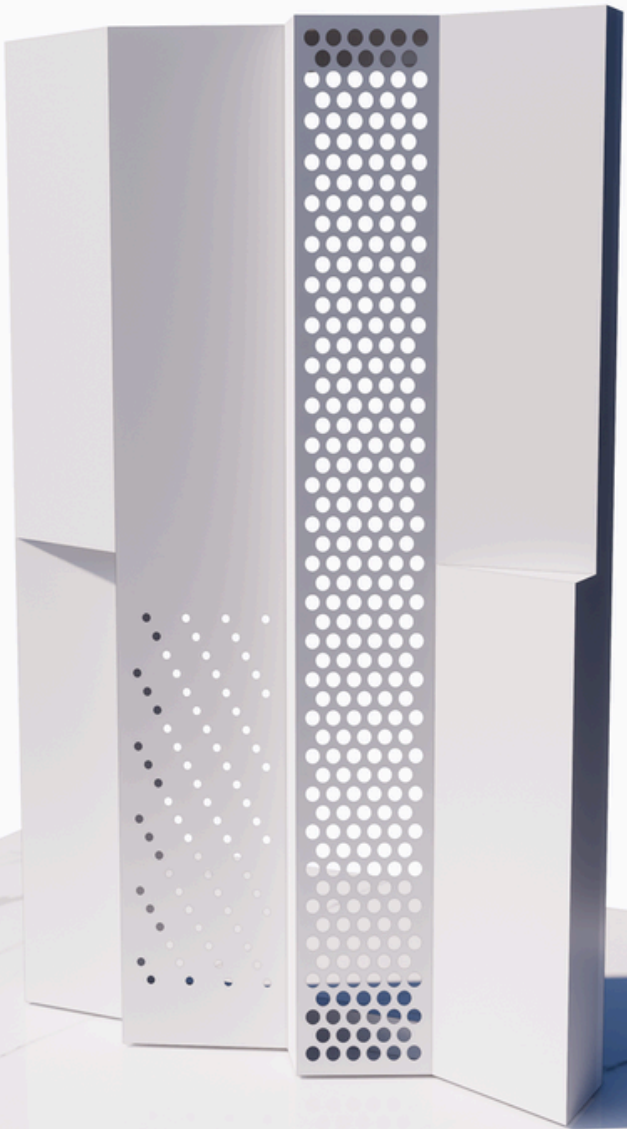


PRODUCT 07

ACM 3D

Our 3D designs bring movement to the facade, turning ordinary walls into captivating, dynamic expressions of modern design.”

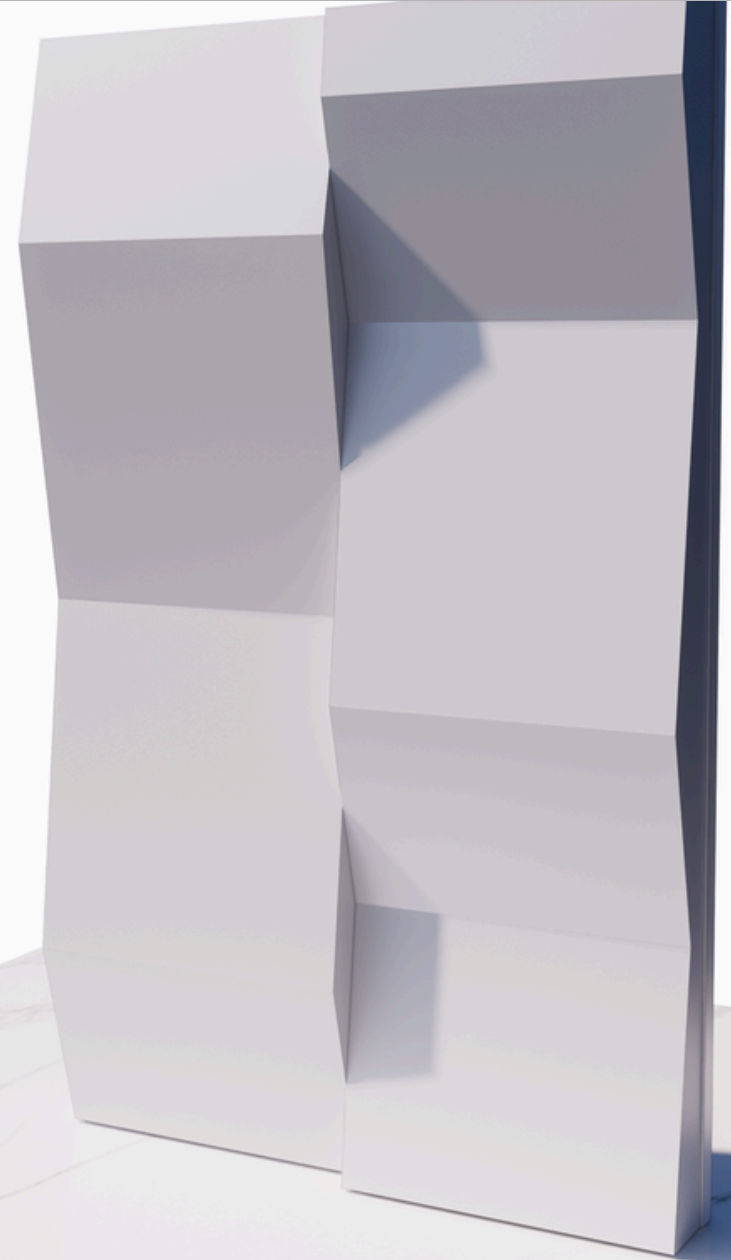
PRODUCT 08



PRODUCT 09

ACM 3D

Whether shaping bold exteriors or crafting stunning interiors, Bxpoke Designs offers the freedom to bring any vision to life, turning spaces into extraordinary works of art.”



PRODUCT 10



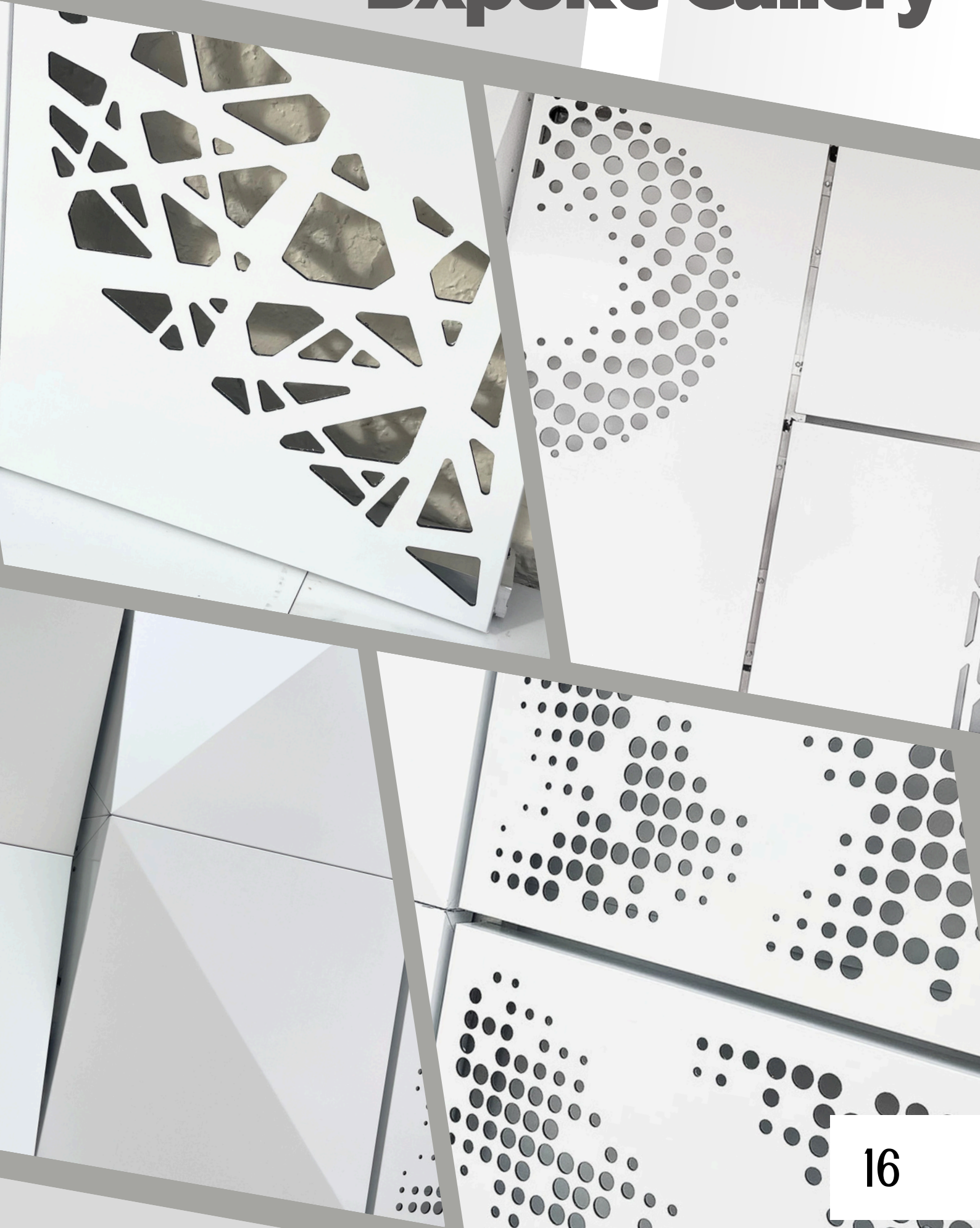
PRODUCT 11

ACM 3D



“ACM cladding redefines architecture, blending strength with beauty to create striking exteriors and inspiring interiors.”

Bxpoke Gallery



**Get Your new
facade today**



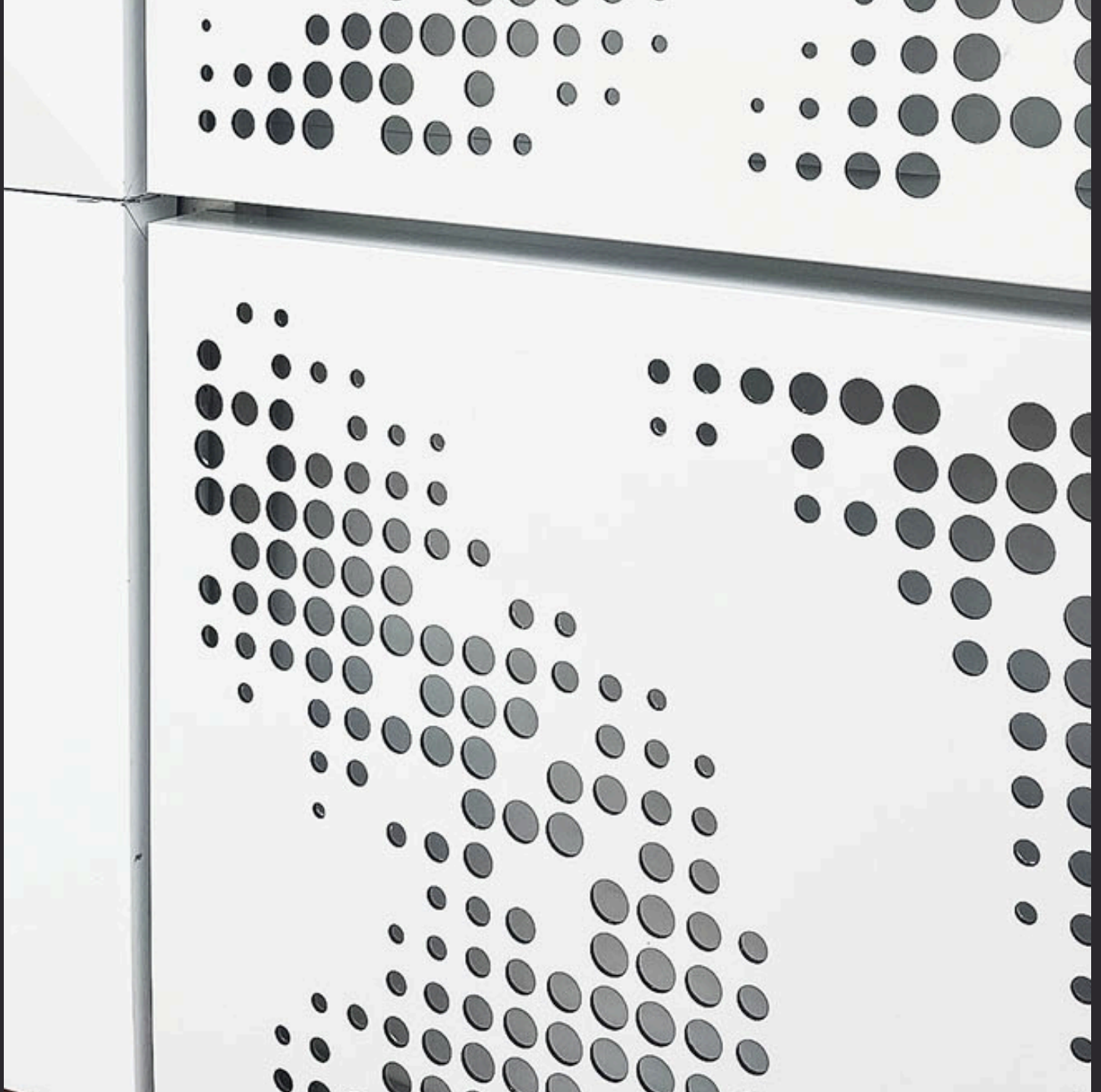


Who we are

Bxpoke Designs is a family-operated business that specializes in providing custom 2D and 3D aluminum composite material (ACM) facade cladding solutions.

The company focuses on transforming architectural visions into reality by offering bespoke cladding systems that enhance the aesthetic and functional aspects of buildings.

This personalized approach, combined with a strong family ethos, enables Bxpoke Designs to deliver exceptional service and craftsmanship to the clients, making them a trusted partner in the architectural and construction industry.



Bxpoke Designs

786 395 2725

Info@bxpoke-designs.com

WWW.BXPOKE-DESIGNS.COM